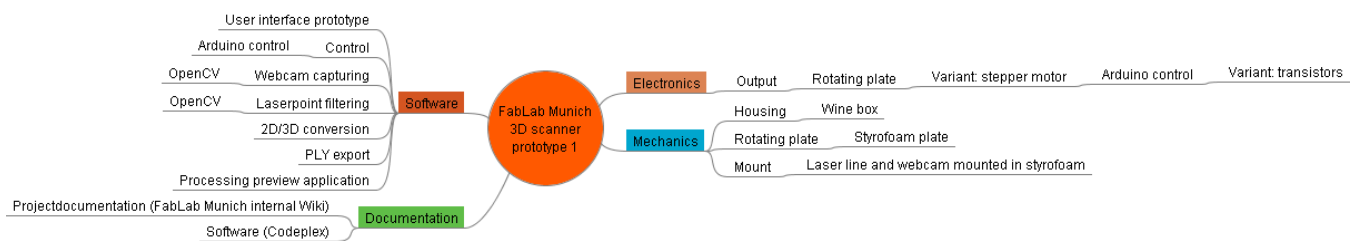
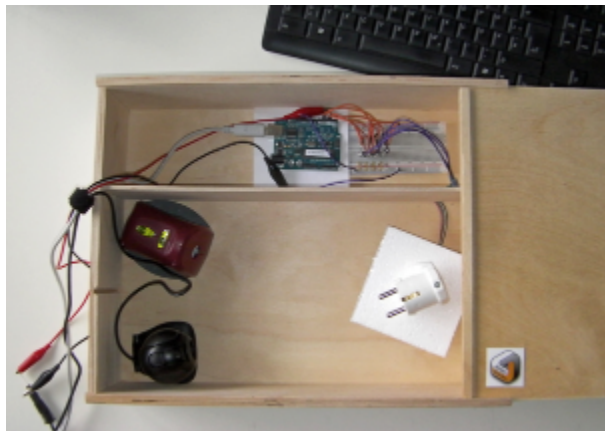


FabLab Munich 3D Scanner - Prototype 1

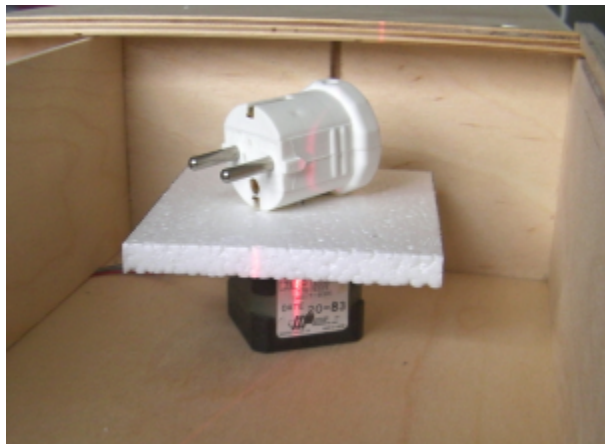
Project Overview



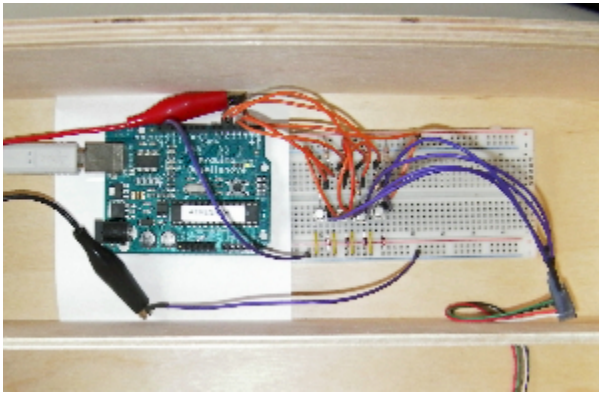
Project Results



Housing with webcam (lower left), Tchibo line laser (upper left), Arduino based stepper control (upper mid) and rotating plate (right).



Rotating plate: styrofoam board, directly mounted on stepper motor. Power plug acts as scan object.

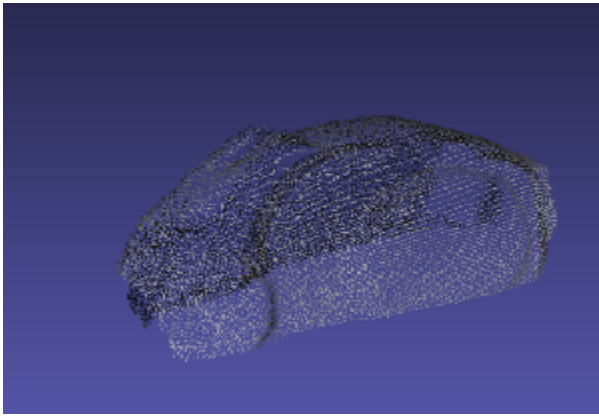


Arduino based stepper control: stepper control realized with transistors.

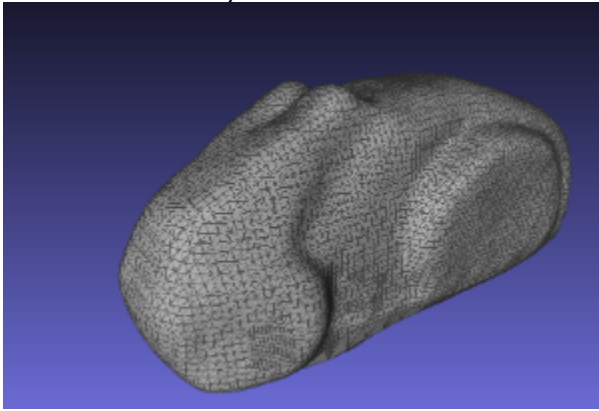
3D Scans



Scan object: modelled figure



Point cloud of scanned object



Triangulated point cloud - triangulation done with software MeshLab.